

#PHOTO EXHIBITION

The 'Mahakumbh' of Photography

To mark the 'World Photography Day' on 19 August, a 3-day photography exhibition 'Nazar' was organized at Jawahar Kala Kendra. The exhibition displayed as many as 200 works of over 100 photographers which included administrative officers, photo journalists, professional photographers as well as students.



Tusharika Singh Freelancer writer and city blogger

The 'long weekend' that recently passed unleashed a wave of inspiration, new perspectives and vigour for shutterbugs in the Pink City, as a 3-day photography exhibition at Jawahar Kala Kendra (JKK) - 'Nazar' - had on display over 200 photographs of over 100 photographers from 19 August to 21 August. The exhibition, being held as part of the Jaipur Photo Festival, served as a platform to unite passionate photographers from various walks of life such as administrative officers, photo journalists, professional pho-



graphers as well as students. Shutterbugs from diverse walks of life unite at Nazar The pictures on display were clicked by a diverse group of photographers from not just the state but also from across the country. While photography enthusiasts from Jaipur, Jodhpur, Bikaner, Barmer, Sawai Madhopur, Udaipur participated in the show from Rajasthan, people from areas like Jammu, Kashmir, Tamil Nadu and Madhya Pradesh also had their works on display. In the international category, photographs clicked by snappers from Denmark, Muscat and Australia were also a part of the exhibition. Some of the noteworthy names whose pho-



Gutter Inspector's Report

In the landmark judgment in V. KISHAN RAO v. NIKHIL SUPER SPECIALITY HOSPITAL & ANOTHER (Civil Appeal No. 2641 of 2010), MARCH 8, 2010 their Lordships G.S. SINGHVI AND ASOK KUMAR GANGULY, invoking the doctrine of res ipsa loquitur, had held that the facts of the case and the evidence on record was sufficient to conclude that 'it was a case of simple malaria that was treated for typhoid, resulting in death of the patient'. That no expert opinion or independent medical assistance was needed to conclude the same. The judgment has been relied upon in several cases to conclude similarly. A medical analysis of the evidence on record in the case however reveals the contrary. Facts speak for themselves.

Dr. Shri Gopal Kabra Veteran Doctor & Voracious writer on medical affairs

#NEEM-HAKIM

not to get the child operated. Consequently, as the child grow the remaining fecal matter keep on increasing, it gets converted into hard fecoliths filling the entire large bowel. At the age of 15, when the boy was admitted in critical condition the abdomen was virtually a septic tank. The associated malnutrition led to severe anemia that could not be corrected even with 20 blood transfusions. The learned judge's findings recorded in the judgment reveal his abominable ignorance of the medical condition, his arrogance of ignorance and utter contempt of modern medicine. The patient had been treated by a highly qualified and competent pediatric surgeon.

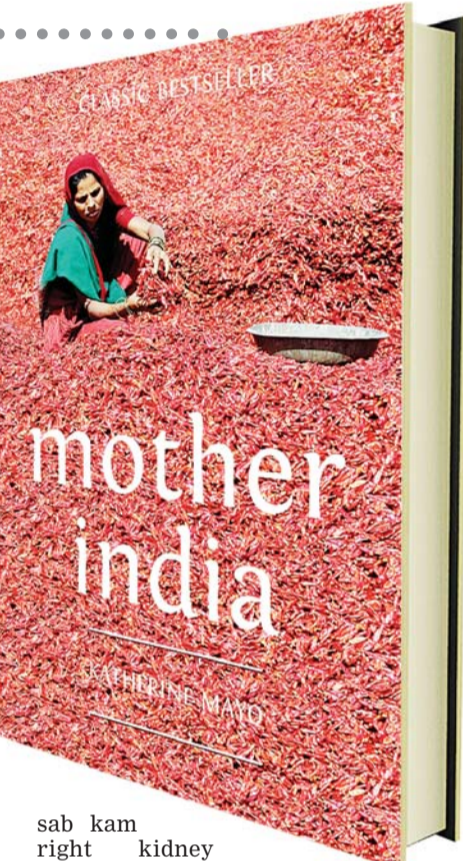
The learned judge's observations

"Mareej ke sirf kabj ki bimari theese jo sadharntaya bharat-varsh me kafi vyaktiyon me payee jati hai. Pura mal visarjan nahin hone par vah pet me jama ho jata hai. Iske best chikitsa ayurvedic chikitsak hote hai jo davayen ke jariye mal nikaal dete hai tatha pet saaf kar dete hai yadi yeh mal jyada jama ho to enema laga kar mal nikal diya jata ka."

"Anaemia ka ilaj iron va vitamins dwara kiya jana chahiye theese jo 20 units rakt aadhaan dete ki avashakta hi nahi thi." In another case of Chorionic Carcinoma of Uterus that had spread out and invaded the urinary bladder. A surgical procedure of Open Abdominal Total Hysterectomy with Bilateral Salpingo-Oophorectomy (removal of diseased uterus with its two tubes and ovaries) was done by a team of three super specialists - a Gynecologist, an Onco-surgeon and a Urologist.

The utter ignorance of the learned judge about the detailed surgical anatomy of ureter and its vulnerability to injury in Hysterectomy, his knowledge base for the judgment in the case, reveals his deep rooted contempt of modern medicine. The arrogance of ignorance is too patent to be ignored. His expert observations:

Ureter pet ka ek organ hai jo kidney se bladder tak urine pahunchata hai. Yah do kidney ke hisab se do hote hai. Ek right kidney ka ek left kidney ka. Yah



sab kam right kidney sambhandhit hai. Ureter ek prakari nalki (tube) hoti hai jo chiknee peshee tantu se bani hoti hai. Uski lambai 25 se 30 centimetre yani 10 se 12 inch tak hoti hai tatha pet saaf kar dete hai 0.12 se 0.16 inch tak moti hoti hai. Andar ka jo bhaag jiske jariye urine jata hai uski motai patang udaane vale majhe jitanai hoti hai. Is se chhed chhed karne par chipkne ka khatarahai hai, puncture hone ka khatarahai hai.

And the learned judge had the audacity to advice on the basis of this 'medical knowledge', the three well qualified and trained super specialists, how the surgery should have been performed to avoid injury to the ureter. Operation ke baad urology se sambandhit samasya aayi. Bachedani bahut badi thi tatha bladder ureter aadi chipke huye the. Bladder ureter aadi chipke huye the jisko pahle alag karna tha uske baad bachedani nikalni thi. Ureter alag to kiya parantu uska

'Cardio-respiratory arrest' is not a cause of death. It is a mode of death. No one dies without his heart and respiration stopping. 'Simple malaria' does not kill anybody.

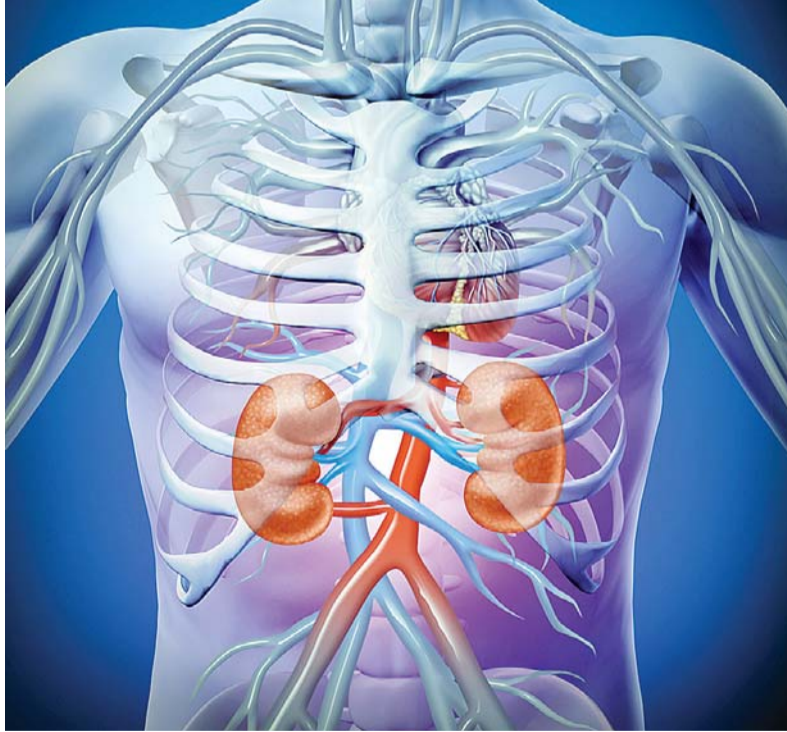
ilaj nahi kiya gaya, na to dye daal kar yah test kiya gaya ki ureter sahi kaam kar rahi hai ya nahi. Doctor ka farj tha ki dye ke jariye ukt ureter ke test kar leta ki vah sahi kam kar rah ya nahi? Yadi vah kisi bhag par pichhak rahi hai to us sthaan par stent daalna chahiye ta ki pichhak na sake. Parantu doctor ne aisa nahi kiya sirf bahar se dekh liya ki ureter ko kshati nahi pahunchi, yadi bahar se leak ho jata to peshaab apne apne surakkh ke jariye bahaar aana shuru ho jata tatha khulkar yah pata chal jata tatha jo kidney kharab hone me 6 mahine me pata chala vah kharab nahi hoti. Ureter ka upchar ho jata is liye leak hone ka prashn hi utpann nahi hota. As the urinary bladder was open the urologist in the team had verified the integrity of ureters by threading catheters through their visible openings and flushing them with water. The learned judge's dictate that he should have used a 'dye' and put a 'stent' only shows arrogant contempt for the competence of a qualified and trained urologist in modern medicine. It is such contempt for the people of India in Mayo's report that prompted Gandhi to call it a gutter inspectors report.

Supreme Injustice

Res ipsa loquitur - the thing speaks for itself. In the landmark judgment in V. KISHAN RAO v. NIKHIL SUPER SPECIALITY HOSPITAL & ANOTHER (Civil Appeal No. 2641 of 2010), MARCH 8, 2010 their Lordships G.S. SINGHVI AND ASOK KUMAR GANGULY, invoking the doctrine of res ipsa loquitur, had held that the facts of the case and the evidence on record was sufficient to conclude that 'it was a case of simple malaria that was treated for typhoid, resulting in death of the patient'. That no expert opinion or independent medical assistance was needed to conclude the same.

The judgment has been relied upon in several cases to conclude similarly. A medical analysis of the evidence on record in the case however reveals the contrary. Facts speak for themselves.

- A. Court's Observations
- Patient admitted for intermittent fever with chills and rigor.
- Peripheral blood film examination



- Later examination revealed presence of Plasmodium Falciparum.
- It was a simple case of malaria.

Medical interpretation:

- Detection of malarial parasites in peripheral blood needs repeated examinations. In case of P Falciparum, when the parasitized RBCs are incarcerated or sequestered in microvasculature, as it occurs in Cerebral Malaria caused by P Falciparum, it is not visible in peripheral blood and requires repeated examinations of peripheral blood to catch them in appropriate cycle of P Falciparum.
- The detection of P Falciparum on later examination in a comatose patient having ARDS, the infection was most likely to be Cerebral Malaria.

- B. Courts observation/finding
- Patient was a simple case of malaria.

Medical interpretation of the record:

- A P Falciparum positive patient

ff

The first two, Monocef and Cifran are broad spectrum antibiotics that are used to treat wide spectrum of bacterial infections including Typhoid bacillus. In acute conditions a combination of broad spectrum antibiotics are used to cover all possible life threatening bacterial infections.

with total leukocyte count of 30900/cumm) with ARDS (Acute respiratory syndrome) was not a 'simple case of malaria'.

Evidence on record:

- Smear for MP-Positive-ring forms & Gametocytes of P Falciparum seen Positive index- 2-3/100 RBCs, deranged prothrombin levels (PT-TEST-22 sec CONTROL-13 sec, APTT-TEST- 92 sec CONTROL-38 sec), CBP-HB-3.8% gms, TLC-30.900/cumm, RBC-1.2/cumm, C X R - s/o ARDS.
- Raised leukocyte count of over 30 thousand shows that the patient simultaneously suffered from severe bacterial infection.
- The patient suffered from life threatening bacterial infection and cerebral malaria, a deadly combination.
- This is substantiated by the treatment of the patient with broad spectrum antibacterial antibiotics and injectable chloroquine, as documented in the records available.

- C. Relied by the court for cause of death of patient
- Cause of Death certificate: 'Cardio respiratory arrest - malaria'.

Medical interpretation:

- It is grossly improper Cause of Death Certificate as -
- 'Cardio-respiratory arrest' is not a cause of death. It is a mode of death. No one dies without his heart and respiration stopping.
- 'Simple malaria' does not kill.
- With the evidence available to the certifying doctor the cause of death certificate should have been evaluated.
- Underlying condition (cause):

Ride the Wind Day

here's no better feeling than the wind in your hair as you look out at a beautiful horizon. Ride the Wind Day is an excellent opportunity to marvel at all things flying and perhaps take part in some flying yourself. Wind powers movement in many different ways help us travel through air and over water, as well as provide us with energy to use in our homes. Take a trip to an aerospace museum or schedule a parachuting or bungee jumping experience, an airplane ride or similar.



#PET-CARE

More Dogs Diagnosed With Diabetes



Mirroring a finding in humans, diabetes diagnoses in dogs are significantly more likely to occur in the winter and in the northern US compared to any other season or region, a new study shows.

For the study in PLOS ONE, researchers looked at 960 pet dogs with diabetes mellitus living across the United States. Though the findings don't explain the underlying cause of this correlation the link with cold weather hints at future possibilities to pursue.

"This link is something that has been discussed in regard to humans with type 1 diabetes, but it's never been rigorously looked at in dogs," says Rebecka Hess, a professor of internal medicine in the University of Pennsylvania School of Veterinary Medicine, and senior author of the study. "It's important to explore because dogs and people live in the same world. If the environment - cold temperatures and seasonality - are important in this disease in both species, it gives us something to look at with further research."

To investigate the relationships between geographic seasonality and diabetes, Hess and Penn Vet colleagues recruited dogs with the condition from across the US, reaching out to all of the nation's veterinary schools, the American Kennel Club and breed clubs, leveraging social media to gain the broadest sample possible.

Owners filled out surveys about their pets including their dog's age, date and age at the time of diabetes diagnosis and state of residence. This was based on the lack of proper appreciation, interpretation and understanding of the medical evidence on record. The medical evidence of severe bacterial infection, septicemia, ARDS and cerebral malaria were too complex to be interpreted by lay persons without the availability of medical expertise. The court's decision that no such assistance was needed or called for is what has resulted into gross injustice, medically speaking.

The conclusion of the Hon'ble court that it was a straight forward case of medical negligence, evident on the face of it (a case of 'malaria' treated for 'typhoid') on the basis of lay interpretation of the treatment of complex medical conditions is presumptuous to say the least. I write to @arbit@rashtrdoot.com

It was supreme injustice to the medical profession. The medical evidence on record speaks for itself. Director Legal and Medical Audit SDM Hospital, Jaipur

"I was surprised we found this connection, even though it had been hinted at before."



difficult to interpret if, for example, we had found increased prevalence in the winter but also in the South."

Of the dogs in the study 3% developed diabetes before they were 1 year old. Like the diagnoses made in adulthood these juvenile onset cases were also more common in colder months and in the North but did not correlate to any particular breed, the researchers say.

Hypotheses about the connection between colder and more northerly climates and diabetes diagnoses in humans include links to vitamin D deficiency, diet, lifestyle and viral infections. In dogs the diet connection seems unlikely.

In addition she says, overweight and obese dogs aren't at higher risk of developing diabetes so a connection with exercise or lack thereof seems unlikely.

In Hess' view, the culprits are more likely to involve how the body processes either vitamin D or insulin. In human studies, lower levels of vitamin D have been connected with an increased likelihood of diabetes. And lower temperatures lead to declines in insulin sensitivity. Hess also says some researchers have floated a connection to a viral infection that may be more prevalent in cold weather.

"Given the close relationship between humans and dogs, and the parallels we see when it comes to diabetes it behooves us to look."

BABY BLUES



By Rick Kirkman & Jerry Scott

ZITS



By Jerry Scott & Jim Borgman

THE WALL

